



ACP
PRESTRESSED CONCRETE
MONOBLOCK SLEEPERS



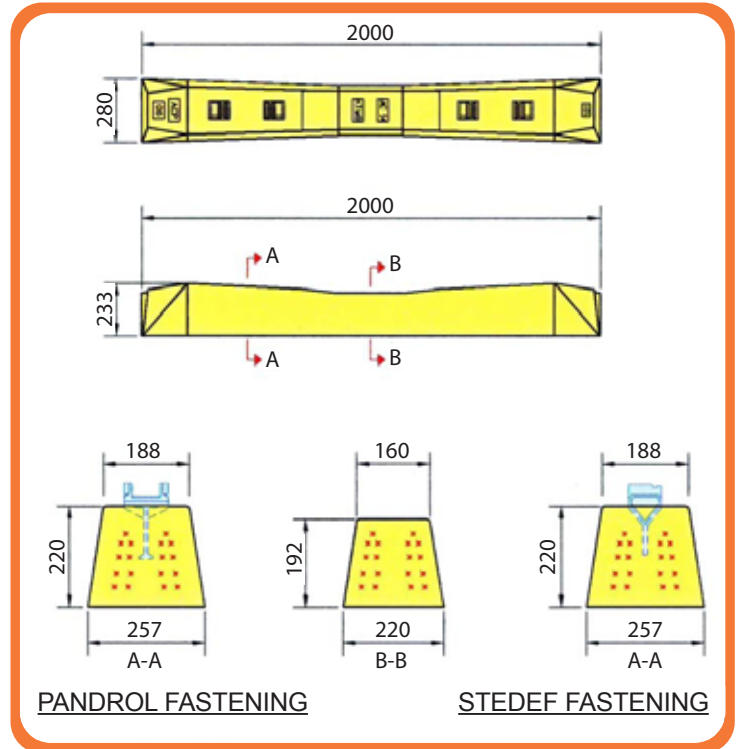
World Class Infrastructure, Worldwide Impact

TECHNICAL DATA & SPECIFICATION

The dedicated prestressed sleeper factory is located at Ipoh, capital of Perak state in Malaysia. The manufacture is based on a long-line production system which ensures a more controlled prestressing process and latest production equipment is employed. The dedicated plant has a current capacity of producing ~300,000 sleepers per annum and expansion facilities are readily available should the need arise. Quality Assurance is based on in-house established MS ISO 9001:2000 series quality management system and all our factories are certified by Standards Industrial Research Institute of Malaysia (SIRIM), which internationally accredited by United Kingdom Accreditation Services (UKAS), to this good manufacturing practice.

Prestressed concrete sleepers can also be designed to EN 13230 or other international codes other than AS1085.14 - 2003 and local KTMB railway authority specification. As to fastening system our current moulds are catered for Pandrol Fastclip and Stedef type however it is possible to adopt other proprietary fastenings such as Vossloh amongst others.

Other available precast concrete products complementing the mainline sleeper include such as **Guard Rail Sleepers, Check Rail Sleepers, Turnout Sleepers, Cable Troughs, Walkways complete with Coping Slabs and Grade Crossing Systems.**



Note:-

1. Prestressed wire position and quantity shown is typical and is dependent on specification.
2. Approximate weight 219kg excluding fastening.
3. Fastening shown is typical

TYPICAL KTMB MAINLINE SLEEPER SPECIFICATION

RAIL TYPE	: UIC54
TRACK GAUGE	: 1000mm
STATIC AXLE LOAD	: 200kN
LENGTH	: 2000mm
CENTRE TO CENTRE SPACING	: 600mm
IMPACT FACTOR	: 2.5
DESIGN CODE	: AS1085.14-2003

TYPICAL FASTENING SYSTEM

- PANDROL FASTCLIP 8668/8081
- STEDEF C610/64F



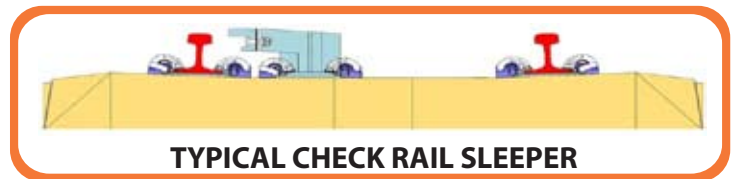
GUARD RAIL SLEEPER ON BRIDGE



GRADE CROSSING SYSTEM



TYPICAL GUARD RAIL SLEEPER



TYPICAL CHECK RAIL SLEEPER

Note : Specification and details shown in brochure subject to change without prior notice due to product development, changing customer and industry requirements.

ASSOCIATED CONCRETE PRODUCTS (MALAYSIA) SDN. BHD. (79877-P)

(A member of the MTD Group)

Head Office: 1, Jalan Batu Caves, 68100 Batu Caves, Selangor Darul Ehsan, Malaysia

Tel: +603 - 6195 1111 Fax: +603 - 6187 3055 Website: www.mtdgrp.com

Region	Branches / Factories	Location	Tel No.	Fax No.
Central	Seremban	Lot 9020 to 9022, Mukim Ampangan, Jalan Jelebu, 70400 Seremban, Negeri Sembilan Darul Khusus, Malaysia.	+606 - 764 2077	+606 - 764 2096
North	Ipoh	Lot 31465, 10km, Jalan Lahat, 31500 Lahat, Perak Darul Ridzuan, Malaysia.	+605 - 321 6479	+605 - 321 6488
South	Pontian	Lot No. 676 & 677, Jalan Ong Eng Kee, Batu 23 1/2 Kampung Choh, 81500 Pekan Nanas, Johor Darul Takzim, Malaysia.	+607 - 699 6095	+607 - 699 2092
East	Kuala Terengganu	SK 90, Kawasan Perindustrian Gong Badak, 20710 Kuala Terengganu, Terengganu Darul Iman, Malaysia.	+609 - 666 7077	+609 - 666 6530